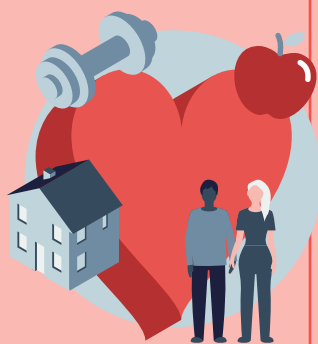


# Welsh NHS Confederation Health and Wellbeing Alliance calls for the 2026 Senedd election

38 organisations from the Welsh NHS Confederation Health and Wellbeing Alliance have come together to outline four priority areas ahead of the Senedd election in May 2026.

We call on all political parties to commit to delivering on the following priorities:



**Prevention:**  
Deliver a national mission to improve the health and wellbeing of the population by tackling poverty and inequalities, preventing the escalation of need for care and support.



**Workforce:**  
Commit to funding and implementing a long-term plan for the NHS and social care workforce.



**Care, treatment and support:**  
Transition to more accessible care, treatment and support delivered in the best place for patients.



**Infrastructure:**  
Increase investment in NHS and social care infrastructure to unlock innovation, boost productivity and capitalise on opportunities afforded by transformative treatments and technologies.

## Prevention

**Deliver a national mission to improve the health and wellbeing of the population by tackling poverty and inequalities, preventing the escalation of need for care and support.**

Led by the First Minister and involving every government department, the next Welsh Government must allocate a ring-fenced budget to prevention to support the people of Wales to become active partners in their health and wellbeing through improved access to health and wellbeing information, activities, screening, tests and vaccines. Tackling inequalities and the wider determinants of health, this mission must shift the focus from treating illness to promoting health and wellbeing.

## Care, treatment and support

**Transition to more accessible care, treatment and support delivered in the best place for patients.**

This should be at home, in the community or in a specialist centre for those who require it. Moving to this delivery model must ensure equal access by putting the health and social care workforce on a more sustainable footing, empowering them to work with the voluntary sector, patients and unpaid carers to redesign services and improve patient experiences and outcomes.

## Workforce

**Commit to funding and implementing a long-term plan for the NHS and social care workforce.**

This plan should prioritise data transparency to support future workforce planning, staff recruitment, retention and wellbeing. At its heart, the plan should focus on the expansion of education and training places, including widening access to professional qualifications through new routes, such as apprenticeships, and increased volunteering opportunities. This would support the development of a multi-professional, integrated, research-minded and digitally enabled workforce for the future.

## Infrastructure

**Increase investment in NHS and social care infrastructure to unlock innovation, boost productivity and capitalise on opportunities afforded by transformative treatments and technologies.**

Sustainability, the impact on the local economy and cost effectiveness must be central to all infrastructure projects. Investment should cover buildings, equipment, digital infrastructure, and technological and research advancements, including supporting the use of genomics and AI to improve outcomes for patients.

## These calls are endorsed by:

- [ABPI](#)
- [Asthma + Lung UK Cymru](#)
- [ASH Wales Cymru](#)
- [British Heart Foundation Cymru](#)
- [Care & Repair Cymru](#)
- [Cancer Research UK](#)
- [Crohn's & Colitis UK](#)
- [Community Leisure UK](#)
- [Chartered Society of Physiotherapy](#)
- [Carers Trust Wales](#)
- [Cymru Versus Arthritis](#)
- [Diabetes UK Cymru](#)
- [Future Generations Commissioner for Wales](#)
- [Fair Treatment for the Women of Wales](#)
- [Learning Disability Wales](#)
- [Marie Curie Cymru](#)
- [Mencap Cymru](#)
- [Macmillan Cancer Support](#)
- [MS Society Cymru](#)
- [Parkinson's UK Cymru](#)
- [RNIB Cymru](#)
- [RNID](#)
- [Royal College of Anaesthetists](#)
- [Royal College of GPs Cymru Wales](#)
- [Royal College of Occupational Therapists](#)
- [Royal College of Paediatrics and Child Health](#)
- [Royal College of Physicians](#)
- [Royal College of Podiatry](#)
- [Royal College of Psychiatrists](#)
- [Royal College of Speech and Language Therapists](#)
- [Royal Pharmaceutical Society](#)
- [Stroke Association](#)
- [Tenovus Cancer Care](#)
- [The British Psychological Society](#)
- [The Royal College of Surgeons of Edinburgh](#)
- [Wales Council for Voluntary Action](#)
- [Wales Neurological Alliance](#)
- [Welsh NHS Confederation](#)

## About the Welsh NHS Confederation Health and Wellbeing Alliance

The Welsh NHS Confederation Health and Wellbeing Alliance (HAWA) was established in 2015 and consists of over 80 health and care organisations from the NHS, local government, healthcare, social care, patient organisations and the professions. The HAWA aims to be a collaborative independent voice, able to identify and seek to address issues affecting the health, social care, wellbeing and the integration agenda, and its impact on people across Wales.

Find out more about the HAWA: [www.nhsconfed.org/HAWA](http://www.nhsconfed.org/HAWA)