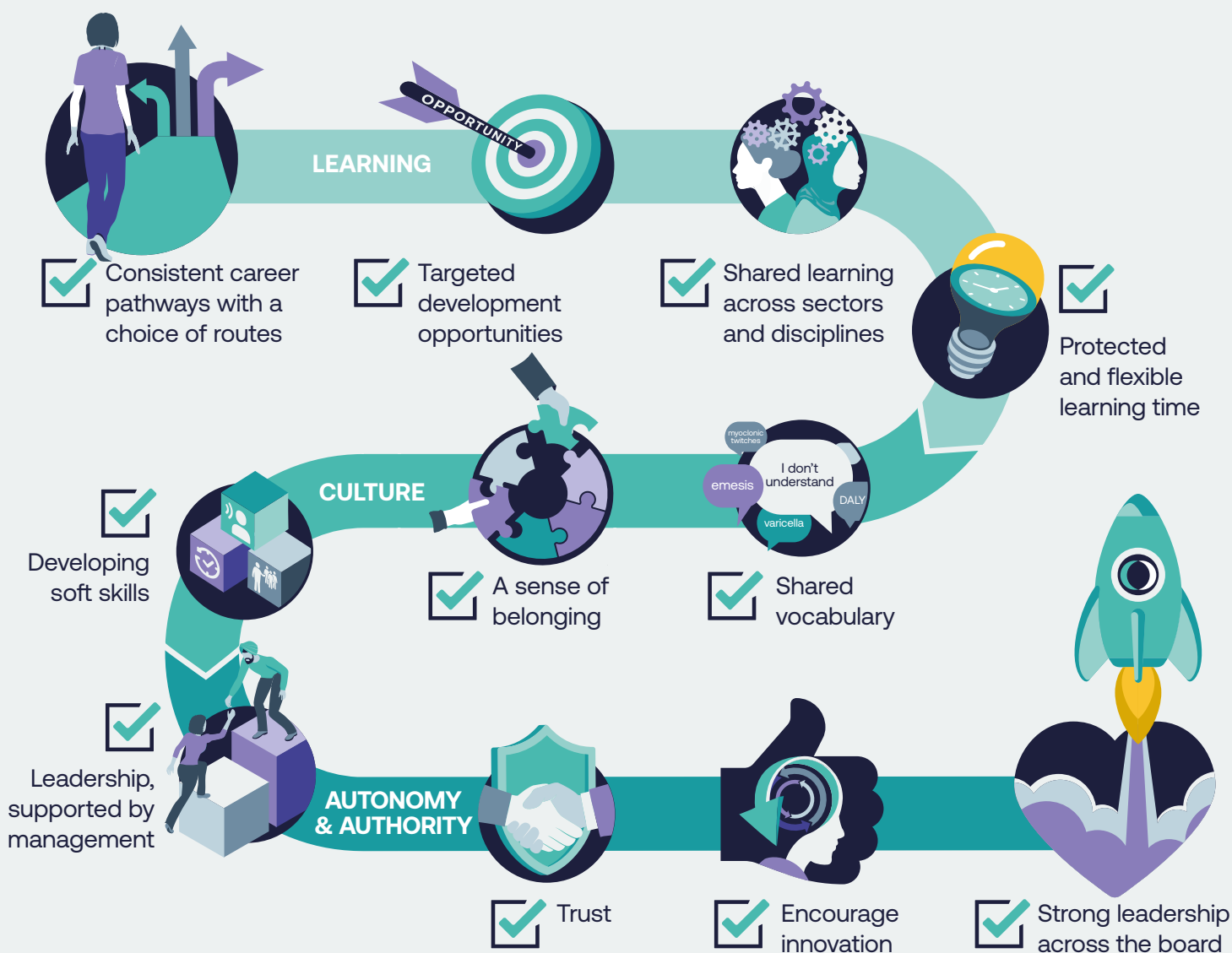


Developing strong clinical and care professional leadership

All parts of health and social care are inextricably linked and need to work together as part of an integrated care system that treats the whole person and their needs for a healthier, happier life.

How can we help clinical and care professional leaders develop leadership skills that reflect this new way of working?



Leadership is an action, not just a title

What does leadership look like in your environment? Do you recognise where you are on this journey?

What can be done to improve the way things are done where you are?

This information is based on workshops held by the NHS Confederation with a multidisciplinary group of clinical and care professionals, focused on NHS England's guidance: *Building Strong Integrated Care Systems Everywhere*.