

Peer learning; Health inequalities and the elective and diagnostic backlog

We will be starting shortly

Please be aware this session will be recorded. Please ensure you are on mute unless asking a question.



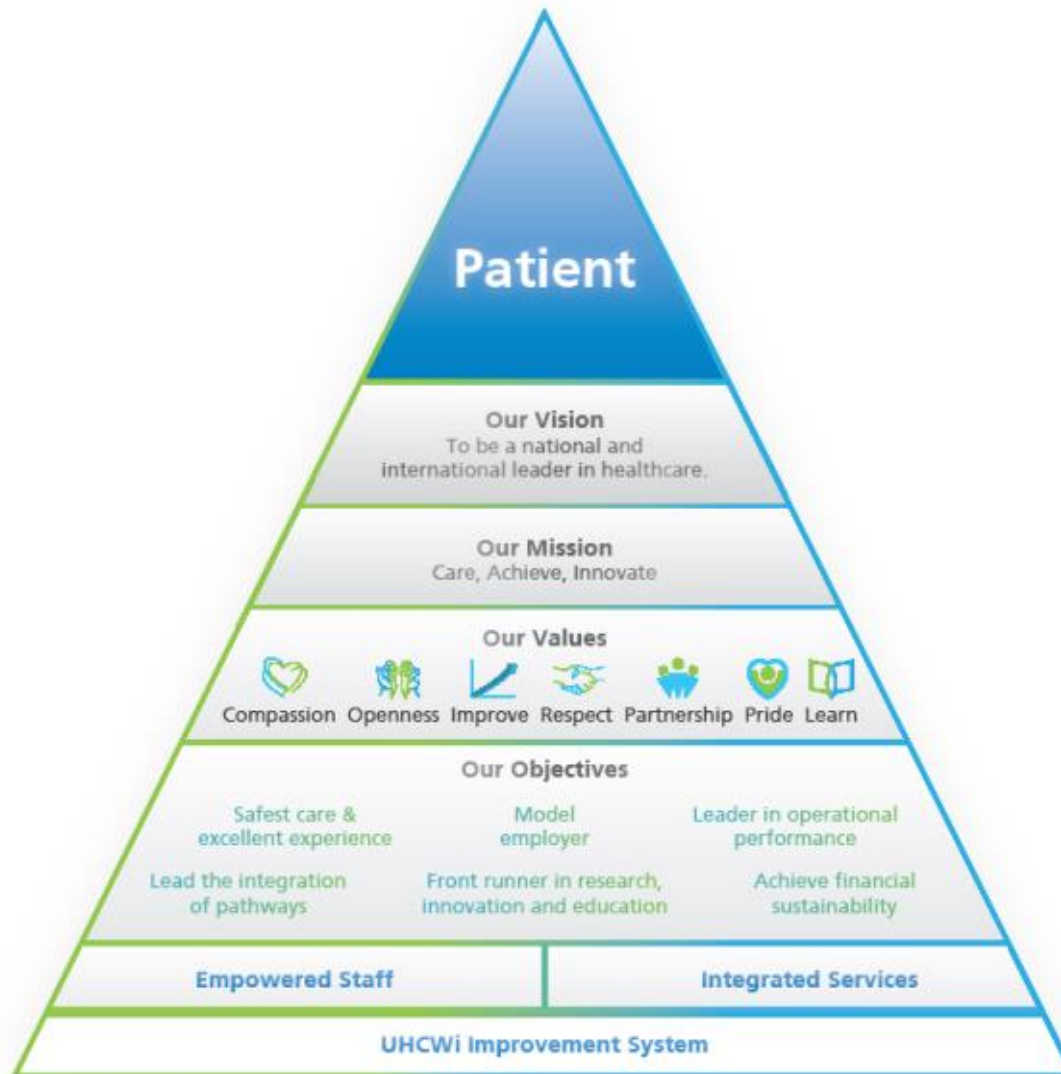
University Hospitals
Coventry and Warwickshire
NHS Trust

Health inequalities and the elective and diagnostic backlog

Professor Kiran Patel, Chief Medical Officer and Deputy CEO

Dr Rachel Chapman, Consultant in Public Health

Putting the Patient First



Health inequalities

- Unacceptable disparities in health based upon
 - Social class
 - Race
 - Gender
- Health differences are not necessarily inequalities
- Access to health services must improve



Inequalities

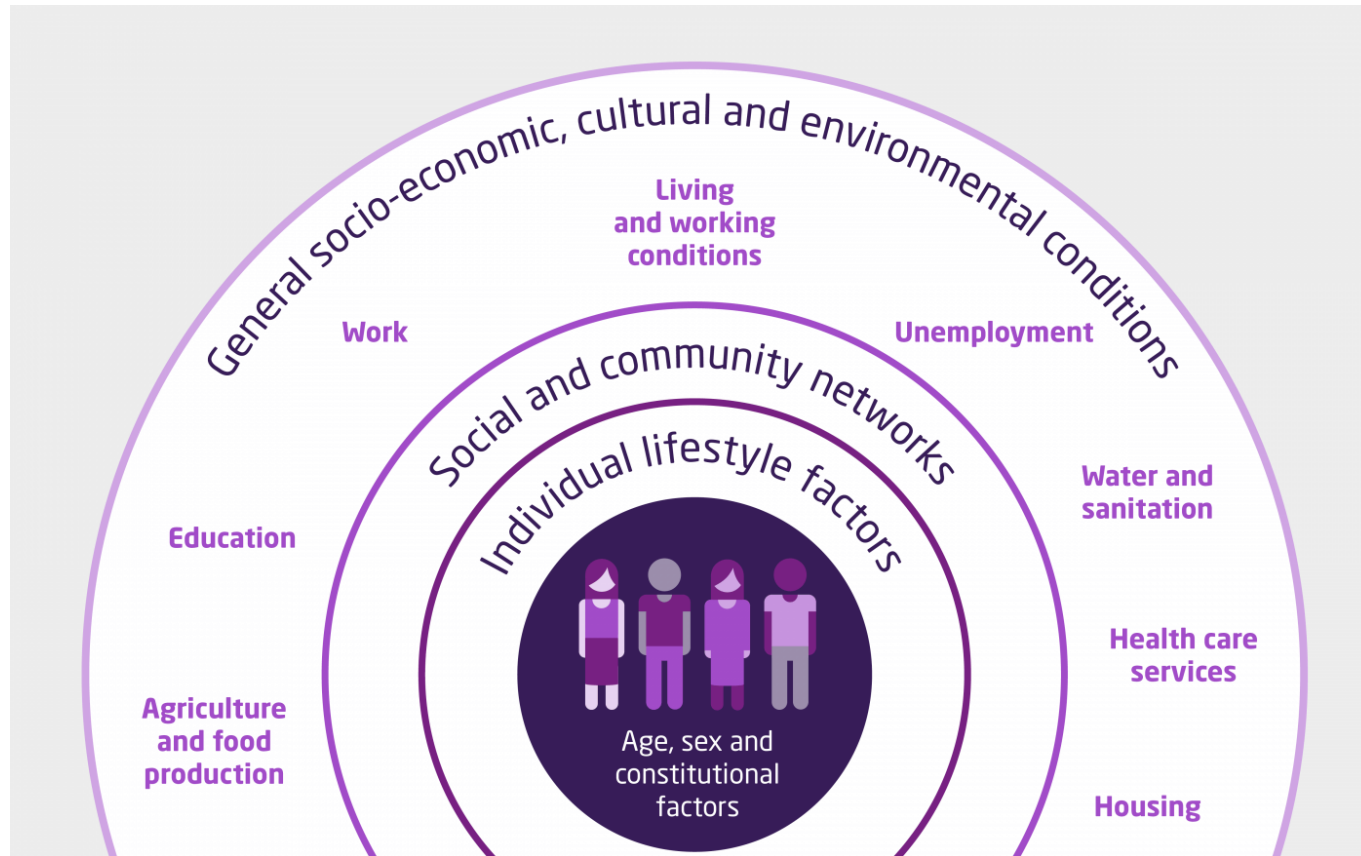
- Deprivation
- Poverty
- Health
- Wealth
- Opportunity
- Ethnicity
- Literacy



- 1980 Black report
- 1998 Acheson report 39 recommendations
- 1999 Saving lives, our healthier nation
- 2000 NHS Plan
- 2002 Cross cutting review
- 2003 Tackling Health Inequalities: A programme for action
- 2004 Wanless report
- 2004 Choosing Health
- 2006 Health Challenge England
- 2006 Our health, our care, our say
- 2008 Health Inequalities: progress and next steps
- 2009 Tackling health inequalities: 10 yrs on report
- 2010 Marmot review

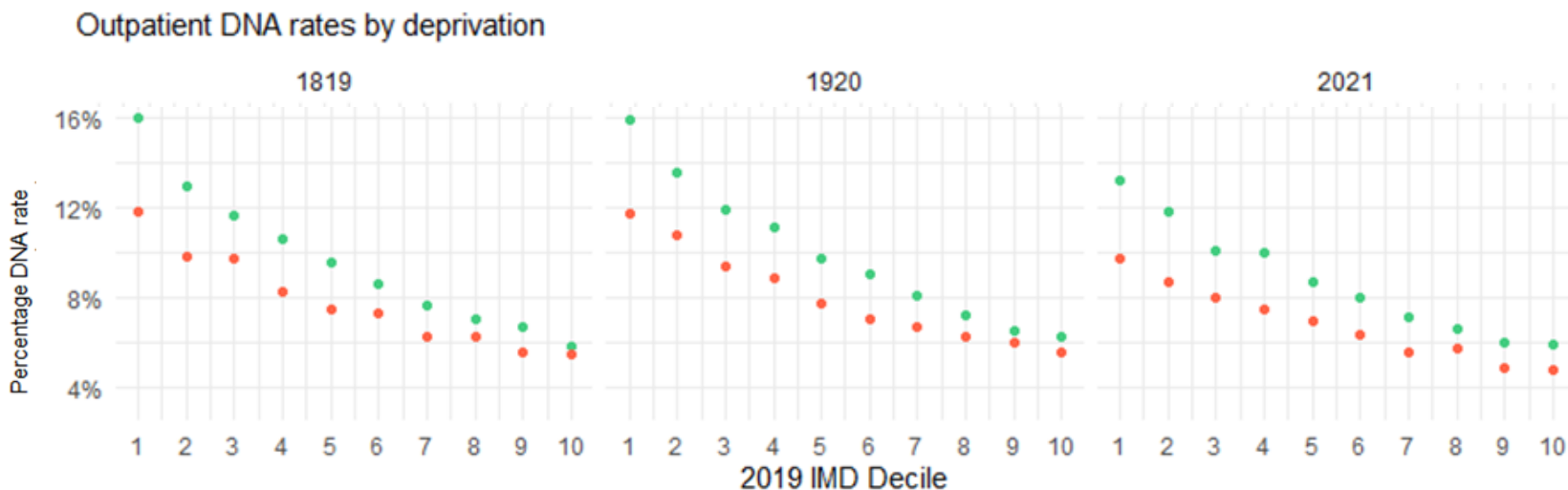


What affects our health?



Dahlgren G, Whitehead M (1993)

NHS service inequalities – OP DNAs

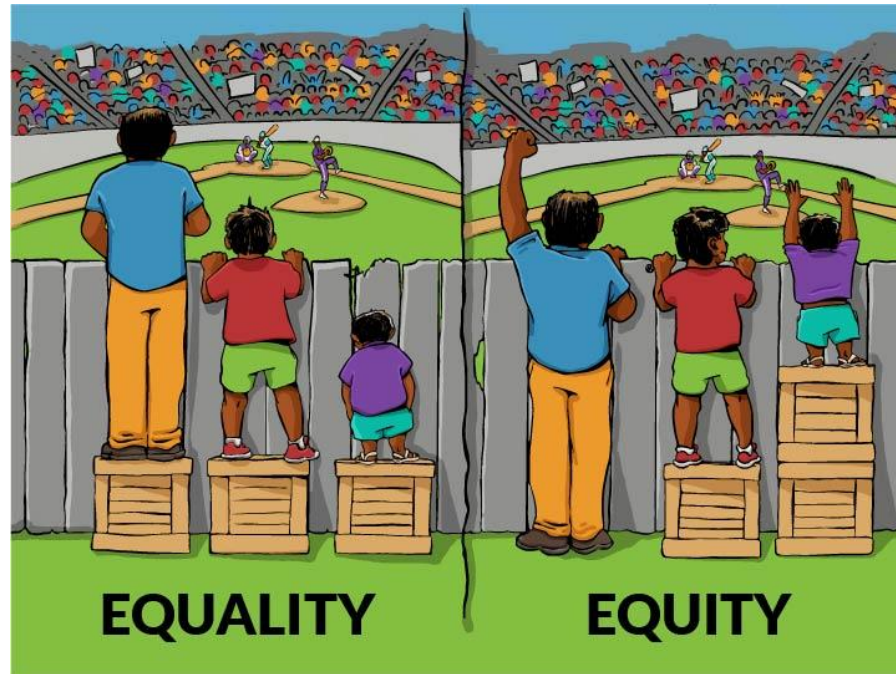


Gender

- 1: Male
- 2: Female

Analysis done by Coventry and Warwickshire CCG BI Team

Priority 1: Focus on equity of outcomes for our population



Interaction Institute for Social Change
Artist: Angus Maguire

Why Waiting lists and RTT fuel inequality

William from Warwick



18 weeks



No impact on family

Norman from Nuneaton

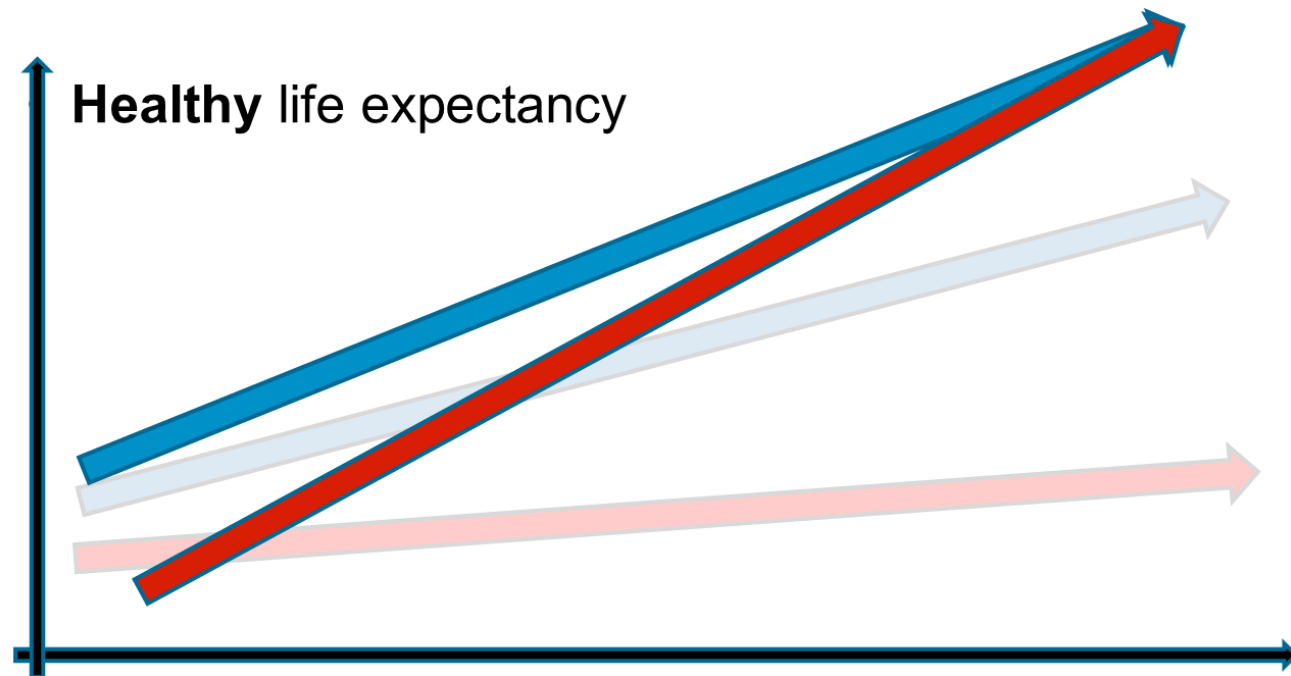


18 weeks



Loses job as unable to work
Impacts family income
Impacts QoL of children

What will this look like in 10 years time?



Tackling inequalities throughout the care pathway



Who are we missing?

- Proactive case finding
- Early referral

How do we ensure timely access?

- Clinical and social prioritisation of waiting lists
- Active waiting
- Poverty proofing

Which patients are more likely to have poor experience/outcomes?

- Pro-active lifestyle referrals
- Social prescribing
- Wider determinants eg housing
- Health literacy
- Prevention in all pathways

EqIA ?

Accelerator experiences



Potential indices

- Would the intervention have an impact on the following?
 - Comorbidities
 - Income/employment
 - Education
 - Quality of life of the patient
 - Quality of life of the family
- Should we assess the above qualitatively or quantitatively?



Discussion



Integration in Action series: Tackling elective recovery as a system

30 September 2021 08:00 - 08:55

At this event we are bringing together front-line leaders to share insights into how they are dealing with the backlog. This is part of a new series from the NHS Confederation entitled Integration in Action, which will be showcasing examples of how local services are working effectively in partnership to address the biggest challenges facing the NHS.

Our panel will discuss how they are responding to the care backlog and we will then have a Q&A with the audience.

<https://www.nhsconfed.org/events/nhs-confederation-integration-action-series-tackling-elective-recovery-system>
