

**Health & Care Women Leaders Network Annual Conference
 Wednesday 13 November 2019, etc. Venues Fenchurch Street.**

The third one-day conference from our Health & Care Women Leaders Network will again bring together senior and aspiring female leaders, along with male colleagues and allies, from across the health and care system to connect, share ideas and come away with practical actions to achieve progress on gender balance across health and care.

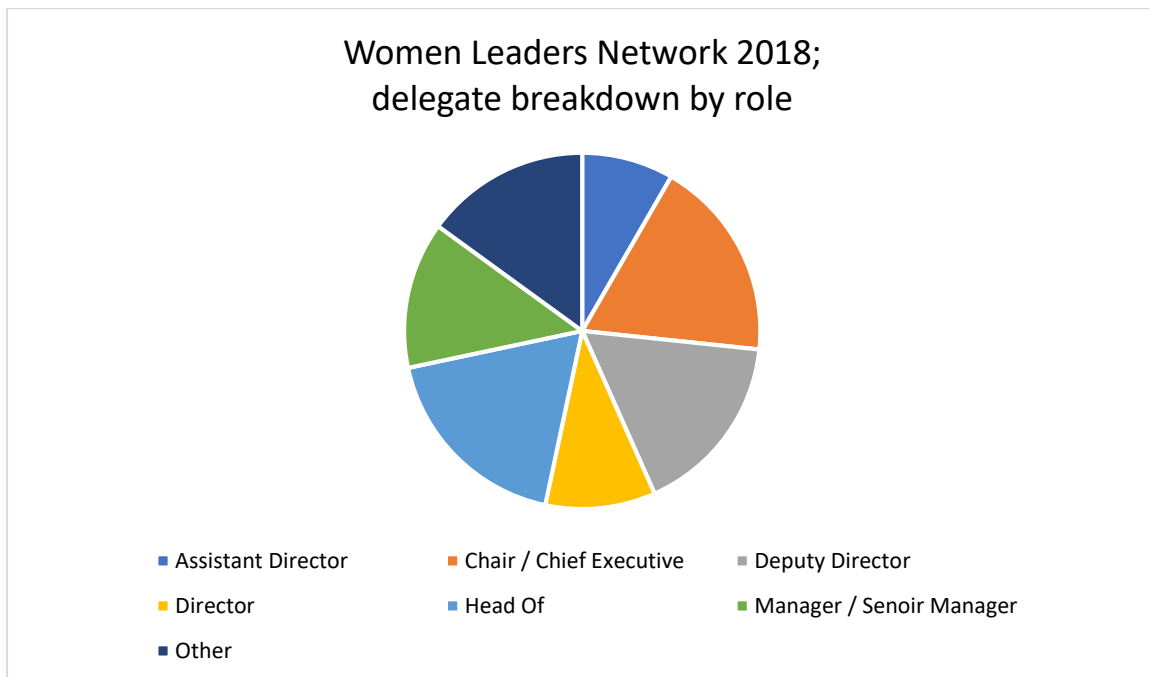
At a time when strong NHS leadership is more vital than ever, don't miss this opportunity to connect and build relationships with some of the most influential and up-and-coming female and male leaders working across health and care.

Between 120 – 150 delegates will attend from a range of roles, including:

- chief executives
- directors
- HR and workforce directors
- clinical leads
- senior managers from acute trusts, mental health, ambulance and community healthcare settings.

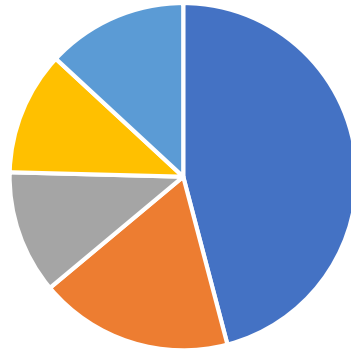
The event provides an excellent opportunity for supporters and partners to get their key messages in front of today's leaders and the leaders of tomorrow. The programme will feature approximately two and a half hours of protected exhibition time for networking with delegates. There are only six stands available, on a first come first serve basis.

A breakdown of the 2018 delegates can be found below.



To discuss any of the packages above please contact a member of the Commercial Team on 0844 800 5989 or email supporters@nhsemployers.org

Women Leaders Network 2018; delegate breakdown by sector



■ NHS Trust / Foundation Trust ■ Clinical Commissioning Group ■ Arms Length Body
■ Commercial ■ Other

Supporter, branding and exhibition opportunities

Event Partner

This package offers the highest level of visibility, branding and involvement at the Health & Care Women Leaders Network annual event. There will only be one event partner at the 2019 conference. The package includes:

- an opportunity to speak in a session on the programme (subject to agreement with NHSE)
- branding pre-event
 - logo on event website
 - logo on marketing emails
 - logo on delegate joining instructions
- top level branding onsite
 - logo on signage & stage set (if applicable)
 - logo on any printed delegate materials
 - logo on holding slides in plenary
- opportunity for sponsor to have banners, literature in session
- seat drop in the opening plenary session or delegate pack insert (up to 8 sides of A4)
- exhibition space in prime location
- note of thanks from conference chair
- 150-word entry plus logo in the conference guide
- 3 delegate passes to the conference
- copy of delegate list (subject to data protection)

Cost £5,000 + VAT

To discuss any of the packages above please contact a member of the Commercial Team on 0844 800 5989 or email supporters@nhsemployers.org

Exhibition opportunities

The exhibition is central to the whole event. It offers delegates a chance to supplement the knowledge gained and discussions started in the conference sessions by sourcing the support, products and services showcased in the exhibition. There will be protected time built into the conference programme for exhibition viewing. The exhibition package includes:

- exhibition space
- trestle table and two chairs
- 1 delegate pass
- 2 stand personnel passes
- access to power and WIFI
- 150-word entry and logo into guide
- website listing and link to your own website
- lunch and refreshments

Cost £1,000 + VAT

(Charity rate available for registered charities 30% discount)

(10% discount for Associate Members)

Branding opportunities

Delegate badges and lanyards

Networking is an important part of the summit and badges are worn by every delegate and speaker. This offers the opportunity for your organisation logo to be seen many times throughout the day. The badges and lanyards package includes:

- logo to appear on all delegate badges and lanyards
- 1 delegate pass
- 150-word entry and logo in the guide

Cost £1,250 + VAT

Delegate bags

Distributed to all delegates upon arrival the delegate bags are used long after the event providing the supporter with additional visibility not only during the summit but post event too. The delegate bag package includes:

- logo to appear on all delegate bags
- 1 delegate pass
- 1 delegate bag insert (up to 8 sides of A4)
- 150-word entry and logo in the guide

Cost £1,250 + VAT

To discuss any of the packages above please contact a member of the Commercial Team on 0844 800 5989 or email supporters@nhsemployers.org

Pens & pads

Support of the pens & pads will provide a highly-visible branding opportunity. The pens and pads package includes:

- logo on all pens and pads
- 1 delegate pass
- 150-word and logo in the guide

Cost £1,000 + VAT

Delegate bag inserts

Inserting collateral into our delegate bags/packs is an excellent way to communicate your key messages directly with the audience. Each piece of material can be up to eight sides of A4 and guarantee a maximum of five inserts.

Note: the insert in the delegate bags will only be confirmed if/once the bags are sold.

Cost £350 + VAT

Advertising space in the conference guide

- Half page advert - £250 + VAT
- Full page advert - £350 + VAT
- Back page advert - £500 + VAT